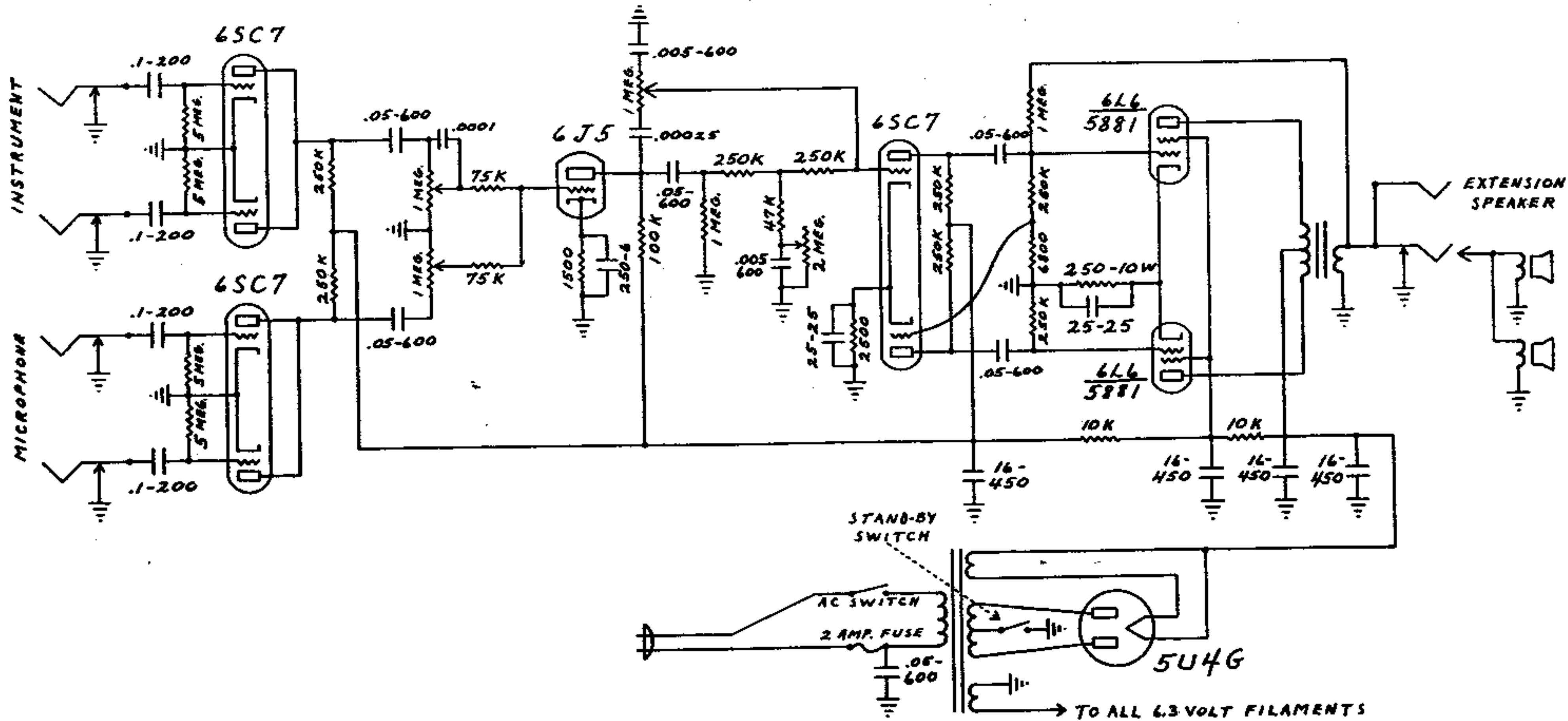


FENDER "TWIN-AMP" SCHEMATIC

MODEL 5C8



FENDER "TWIN-AMP" LAYOUT

MODEL 5C8

NOTICE ALL VOLTAGES
 READ TO GROUND WITH ELECTRONIC
 VOLTMETER. VALUES SHOWN $\pm 20\%$

